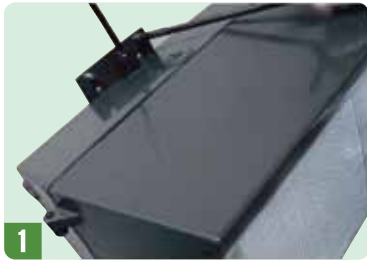


Architectural Luminaire

Installation Instruction



1 Remove nut



2 Take off the bracket



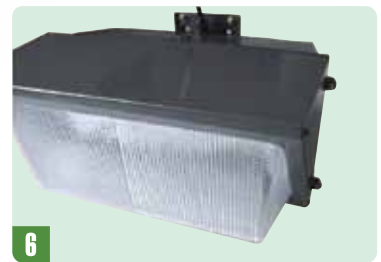
3 Drill 4 hole with $\phi 8$. Assemble the expansion bolt on the wall and fasten the bracket on the wall with screw M6



4 Put on the fixture



5 Mount the nut then lock them



6 Complete installation



7

The above data is subject to change without notice.