

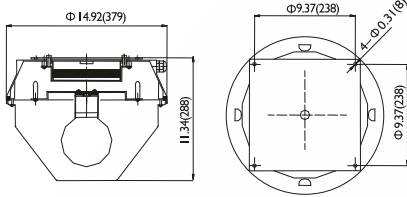


## Canopy Luminaire



### ❖ JGL-GCF02c Series

Unit: inches(mm)



#### Features

- ☉ Die cast aluminum housing with powder coated surface for corrosion resistance and durable use.
- ☉ High purity aluminum reflector; UV stabilized polycarbonate lens.
- ☉ Ceiling installation.

#### Lamp and Ballast

- ☉ JGL's 35W, 55W ball type or 40~80W round tubular induction lamp features high lumen efficacy, long lifetime, good color rendering, stable output, maintenance free, saving energy, etc.
- ☉ JGL's electronic ballast features high power factor(>0.95), flickering free, low loss, constant output, etc.

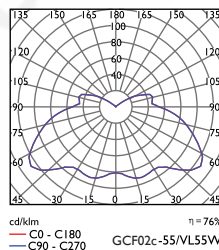
#### Applications

- ☉ Garage, gas station, warehouse.

#### Fixture Specifications:

Fixture Model No.	Lamp (W)	Voltage (V)	Color Temperature (K)	Ambient Temperature (°C)	Installation	IP class	Package size L×W×H (mm)	Net weight (Kg)	UL CUL
GCF02c-35S-JGL	VL35W	120~277	5000	-20~+40	Roof mount	IP43	400×400×335	5.7	✓
GCF02c-40S-JGL	RT40W	120~277	5000	-20~+40	Roof mount	IP43	400×400×335	5.7	✓
GCF02c-55S-JGL	VL55W	120~277	5000	-20~+40	Roof mount	IP43	400×400×335	5.7	✓
GCF02c-70S-JGL	RT70W	120~277	5000	-20~+40	Roof mount	IP43	400×400×335	5.7	✓
GCF02c-80S-JGL	RT80W	120~277	5000	-20~+40	Roof mount	IP43	400×400×335	5.7	✓

Note: Color temperature 2720-6500K available upon request.



The above data is subject to change without notice.